

Closed modular care trolleys



These new care trolleys were developed to provide a versatile addition to the open modular ward trolleys.

The trolley is standard equipped with straight liners in which the modules and baskets 300 x 400 Type MDS fit.

This care trolley is available in two versions: without a door and with a transparent door in combination with a number lock. The standard colour of the body is grey.

* Visual material not binding.

This closed modular care trolley is a derivative of the Medcart Drawers Small. The body, the synthetic worktop, the angle profiles for attaching the accessories and the wheels are identical in quality and functionality.



» Synthetic worktop

The sleek synthetic worktop consists of **one continuous surface** with raised edges on 3 sides. There are **no sharp edges**, which makes the worktop easy to clean.

The worktop has a high scratch resistance, suitable for all common cleaning products and disinfectants and is UV- and heat-resistant. Everything wipes right off, even disinfectants that stain like ISO Betadine®.

A stainless steel worktop is also possible upon request.



» Corner profiles

The extrusions are designed as such, that all Belintra accessories can be installed very easily, even by your own technical staff.

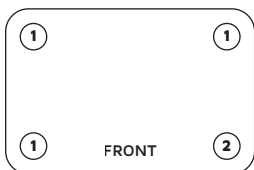


» Castors

The castors meet the highest quality standards, and the design is the result of years of expertise. Studies have shown that the dual castors result in **50% less rolling resistance and improved maneuverability of the cart.**



The closed modular care trolleys has dual Tente® swivel castors, 1 with a brake (antistatic).



1. Swivel castor
2. Swivel castor with brake - antistatic

Option: swivel castor with brake and/or swivel castor with directional lock



» Transparent door

The transparent door is made of high-quality polycarbonate (PC). These doors score excellent in terms of impact resistance, high strength and transparency. This is due to careful raw material and material selection in combination with continuous quality maintenance during the production process.

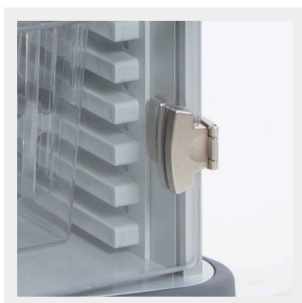
The door is equipped with two magnetic closures.



» Handle

The door has a vertical handle in aluminium look which, thanks to the rounded corners, can be easily cleaned and disinfected.

The handle is ergonomic and has a lacquered finish that is soft to the touch.



» Hinges

The care carts with a PC door have 2 hinges on the right side that allow the door to be opened 270°.



» Accessories

The accessories are mounted in the corner profiles. All accessories that are suitable for the Medicart Drawers Small can also be mounted on the closed modular care trolley.

If the cart is finished with a door, the accessories can only be mounted on the left side.



» Number lock

The trolley with door is equipped with a combination lock LS101 from Safe-o-Tronic® for protection against unauthorized access.

The default 4-digit code can be changed to a new unique code.



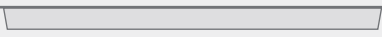

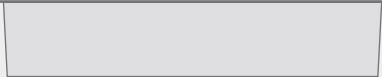
» Liners

The care trolley is preferably filled in on the inside with straight liners Type MDS-2 with 24 positions. The liners must be ordered separately.

For further completion with baskets, we refer you to the diagram below. You must order these separately according to your needs.

Dimensions closed modular care trolley: 502 x 464 x 1102 mm

Standard height worktop: 1052 mm

Number of positions	MDS-2	MDS-1	
Total	24	16	
Module or basket of 50 mm	2	2	
Module or basket of 100 mm	4	3	
Module or basket of 200 mm	6	5	

» Closed modular care trolleys



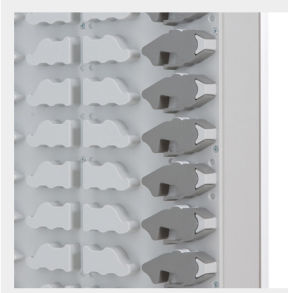
» Closed modular care trolley

Article Number	Description
<u>19037 00001</u>	without door
<u>19037 00003</u>	with transparent door and number lock



» Set of straight liners Type MDS-2 (these must be ordered separately)

Article Number	Description	Number of positions
19037 00004	straight liner	24



» Set of ergonomic liners Type MDS-1 (these must be ordered separately)

Article Number	Description	Number of positions
Upon request	ergonomic liner	16

Content: to be ordered separately. See chapter Modular Transport & Storage.